

TO RETAILER OR DISTRIBUTOR

**URGENT - VOLUNTARY RECALL - Protein bars -  
UPDATE - January 22, 2009**

Supreme Protein, Inc. is voluntarily recalling the specific lots listed below (as updated January 22, 2009) of the Supreme Protein® Peanut Butter Crunch Bars and Caramel Nut Bars. The specific products are:

- Supreme Protein® brand Peanut Butter Crunch Bars (20, 43\* and 86 gram sizes)
- Supreme Protein® brand Caramel Nut Bars (20, 50\* and 96 gram sizes)
- Supreme Protein® brand Caramel Nut (Energy) Bars

The bars are being recalled out of an abundance of caution because they contain peanut paste manufactured at the Peanut Corporation of America (PCA). PCA has recalled specific lots of peanut paste for possible *Salmonella* contamination. The recall extends to the consumer level.

People infected with *Salmonella* can have some or all of nausea, vomiting, diarrhea or bloody diarrhea, abdominal cramping and fever. Rarely, *Salmonella* can result in more serious disease, including headache, joint pain, muscle pain, eye irritation, and urinary tract symptoms. For more information on Salmonella, please visit the Centers for Disease Control and Prevention's Website at [www.cdc.gov](http://www.cdc.gov), or call 800-CDC-INFO (800-232-4636). Consumers exhibiting these signs after having contact with this product should contact their healthcare providers.

Supreme Protein requests that all distributors and retailers check the lot numbers listed below. Other lot numbers of Supreme Protein products are not affected. **Please read and complete the following forms in their entirety before discarding any product.**

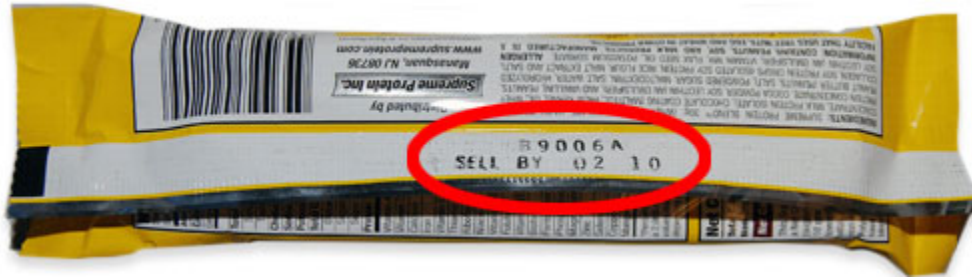
**Distributors:** Please immediately discontinue supplying these lot numbers to retailers, and discard all affected inventory in your possession, by double bagging and tying off the product in dark industrial type garbage bags. Please use the enclosed Distributor Product Destruction Log to report the amount of the inventory on hand and confirm that it has been discarded or otherwise destroyed. It is urgent that you immediately notify your retail customers to this recall and instruct them to properly discard all affected lot numbers in their inventory. Please have them complete the enclosed Retailer Product Destruction Log and return it to you. Please forward all completed Product Destruction Logs to your Supreme Protein sales representative.

**Retailers:** Please immediately remove products from retail shelves and storage, and discard all affected inventory in your possession, by double bagging and tying off the product in dark industrial type garbage bags. Please use the enclosed Retailer Product Destruction Log to report the amount of the inventory on hand and confirm that it has been properly discarded. Please return the completed Product Destruction Log to your Supreme Protein sales representative.

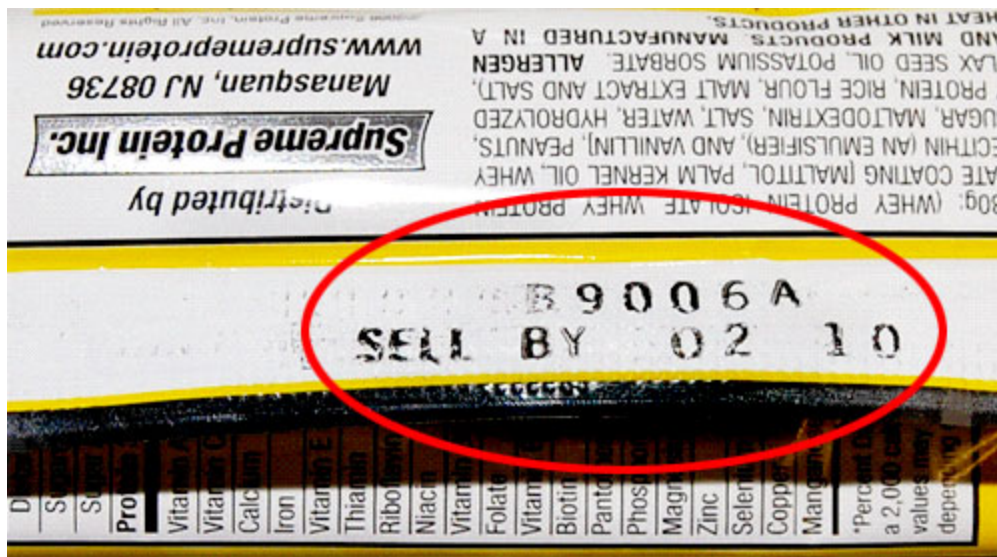
---

\* Canadian version also

1) To identify the Lot Number, locate the underside of the long seal on the bar wrapper.



2) The Lot Number is shown directly above the Sell By Date. If your Lot Number appears on the list of below, do not sell bar. Please discard the entire product.



Once Supreme Protein has received certification that your inventory has been discarded it will provide information regarding the crediting or replacement of these products as soon as possible.

If you have questions or need further information, please contact your Supreme Protein sales representative at 1-888-739-9881 Monday through Friday Between 8am-6pm est. Supreme Protein appreciates your assistance with its voluntary recall and regrets any inconvenience this recall may cause. We will take whatever steps we can to facilitate replacement of the products.



# Distributor Product Destruction Log

1. Name and address of distributor: \_\_\_\_\_  
\_\_\_\_\_

2. Estimated number of packages of affected Supreme Protein® brand products (see attached list of affected lot numbers) in distributor's possession when notified of the recall:

Supreme Protein® brand Peanut Butter Crunch Bars

20 boxes \_\_\_\_\_ single bars \_\_\_\_\_  
43 boxes \_\_\_\_\_ single bars \_\_\_\_\_  
86 gram sizes boxes \_\_\_\_\_ single bars \_\_\_\_\_

Supreme Protein® brand Caramel Nut Bars

20 boxes \_\_\_\_\_ single bars \_\_\_\_\_  
50 boxes \_\_\_\_\_ single bars \_\_\_\_\_  
96 gram sizes boxes \_\_\_\_\_ single bars \_\_\_\_\_

Supreme Protein® brand Caramel Nut (Energy) Bars boxes \_\_\_\_\_ single bars \_\_\_\_\_

3. Number of packages of affected Supreme Protein® brand products discarded by the distributor:

Supreme Protein® brand Peanut Butter Crunch Bars

20 boxes \_\_\_\_\_ single bars \_\_\_\_\_  
43 boxes \_\_\_\_\_ single bars \_\_\_\_\_  
86 gram sizes boxes \_\_\_\_\_ single bars \_\_\_\_\_

Supreme Protein® brand Caramel Nut Bars

20 boxes \_\_\_\_\_ single bars \_\_\_\_\_  
50 boxes \_\_\_\_\_ single bars \_\_\_\_\_  
96 gram sizes boxes \_\_\_\_\_ single bars \_\_\_\_\_

Supreme Protein® brand Caramel Nut (Energy) Bars boxes \_\_\_\_\_ single bars \_\_\_\_\_

I hereby certify that the stated quantities are true and correct and were discarded by double bagging and tying off the product in dark industrial type garbage bags.

\_\_\_\_\_  
[Name/Title]

## Retailer Product Destruction Log

1. Name and address of retailer: \_\_\_\_\_  
\_\_\_\_\_

2. Estimated number of packages of affected Supreme Protein® brand products (see attached list of affected lot numbers) in retailer's possession when notified of the recall:

Supreme Protein® brand Peanut Butter Crunch Bars

20	boxes _____	single bars _____
43	boxes _____	single bars _____
86 gram sizes	boxes _____	single bars _____

Supreme Protein® brand Caramel Nut Bars

20	boxes _____	single bars _____
50	boxes _____	single bars _____
96 gram sizes	boxes _____	single bars _____

Supreme Protein® brand Caramel Nut (Energy) Bars \_\_\_\_\_

3. Number of packages of affected Supreme Protein® brand products discarded by the retailer:

Supreme Protein® brand Peanut Butter Crunch Bars

20	boxes _____	single bars _____
43	boxes _____	single bars _____
86 gram sizes	boxes _____	single bars _____

Supreme Protein® brand Caramel Nut Bars

20	boxes _____	single bars _____
50	boxes _____	single bars _____
96 gram sizes	boxes _____	single bars _____

Supreme Protein® brand Caramel Nut (Energy) Bars boxes \_\_\_\_\_ single bars \_\_\_\_\_

I hereby certify that the stated quantities are true and correct and were discarded by double bagging and tying off the product in dark industrial type garbage bags.

\_\_\_\_\_  
[Name/Title]